



SAW Components

Data Sheet B7301





SAW Components

B7301

Low-Loss Filter for Mobile Communication

400,0 MHz

Data Sheet



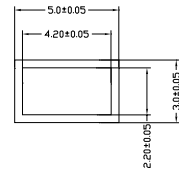
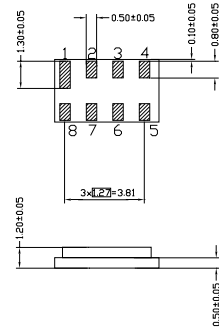
Chip Sized SAW Package DCS8A

Features

- Low-loss IF filter for mobile telephone
- Channel selection in GSM, PCN, PCS systems
- **Chip Sized SAW Package**
- Balanced and unbalanced operation possible
- expansion coil for minimum insertion attenuation and optimum bandwidth adjustment

Terminals

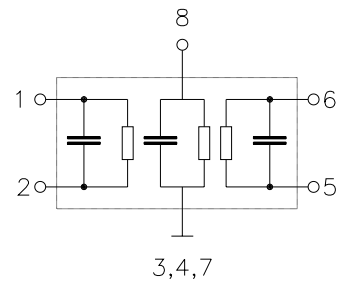
- Gold-plated Ni



Dimensions in mm, approx. weight 0,05 g

Pin configuration

- | | |
|---------|----------------------------------|
| 1 | Input |
| 2 | Input ground or balanced input |
| 6 | Output |
| 5 | Output ground or balanced output |
| 3, 4, 7 | Ground |
| 8 | Expansion coil |



Type	Ordering code	Marking and Package according to	Packing according to
B7301	B39401-B7301-A910	C61157-A7-A65	F61074-V8102-Z000

Electrostatic Sensitive Device (ESD)

Maximum ratings

Operable temperature range	T_A	- 30/+ 85	°C
Storage temperature range	T_{stg}	- 40/+ 85	°C
DC voltage	V_{DC}	0	V
Source power	P_s	10	dBm



SAW Components

B7301

Low-Loss Filter for Mobile Communication

400,0 MHz

Data Sheet



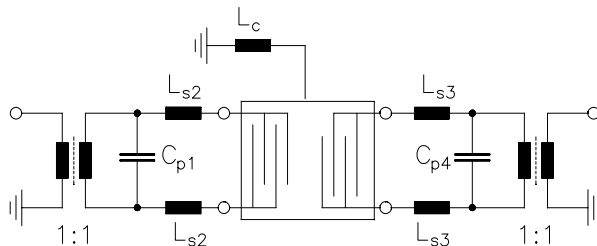
Characteristics

Operating temperature range: $T = -25\text{ °C} \dots +80\text{ °C}$
 Terminating source impedance: $Z_S = 640\Omega \parallel 100\text{ nH}$
 Terminating load impedance: $Z_L = 640\Omega \parallel 120\text{ nH}$

		min.	typ.	max.	
Nominal frequency	f_N	—	400,00	—	MHz
Maximum insertion attenuation (Including losses in matching circuit)	α_{\max}	—	4,3	6,0	dB
Amplitude ripple (p-p) $f_N - 83.0\text{ kHz} \dots f_N + 83.0\text{ kHz}$	$\Delta\alpha$	—	0,2	2,0	dB
Group delay ripple (p-p) $f_N - 83.0\text{ kHz} \dots f_N + 83.0\text{ kHz}$	$\Delta\tau$	—	0,4	1,0	μs
Relative attenuation (relative to α_{\max})	α_{rel}				
$f_N - 30,00\text{ MHz} \dots f_N - 1,50\text{ MHz}$		37	53	—	dB
$f_N - 1,50\text{ MHz} \dots f_N - 0,80\text{ MHz}$		22	46	—	dB
$f_N - 0,80\text{ MHz} \dots f_N - 0,60\text{ MHz}$		12	48	—	dB
$f_N - 0,60\text{ MHz} \dots f_N - 0,40\text{ MHz}$		9	25	—	dB
$f_N + 0,40\text{ MHz} \dots f_N + 0,60\text{ MHz}$		9	18	—	dB
$f_N + 0,60\text{ MHz} \dots f_N + 0,80\text{ MHz}$		12	31	—	dB
$f_N + 0,80\text{ MHz} \dots f_N + 1,50\text{ MHz}$		22	39	—	dB
$f_N + 1,50\text{ MHz} \dots f_N + 30,00\text{ MHz}$		37	50	—	dB
Impedance within pass band					
Input: $Z_{\text{IN}} = R_{\text{IN}} \parallel C_{\text{IN}}$		—	640 \parallel 1,6	—	$\Omega \parallel \text{pF}$
Output: $Z_{\text{OUT}} = R_{\text{OUT}} \parallel C_{\text{OUT}}$		—	640 \parallel 1,4	—	$\Omega \parallel \text{pF}$
Temperature coefficient of frequency ¹⁾	TC_f	—	-0,038	—	ppm/K ²
Frequency inversion point	T_0	—	36	—	°C

¹⁾ Temperature dependence of f_c : $f_c(T) = f_c(T_0)(1 + TC_f(T - T_0)^2)$

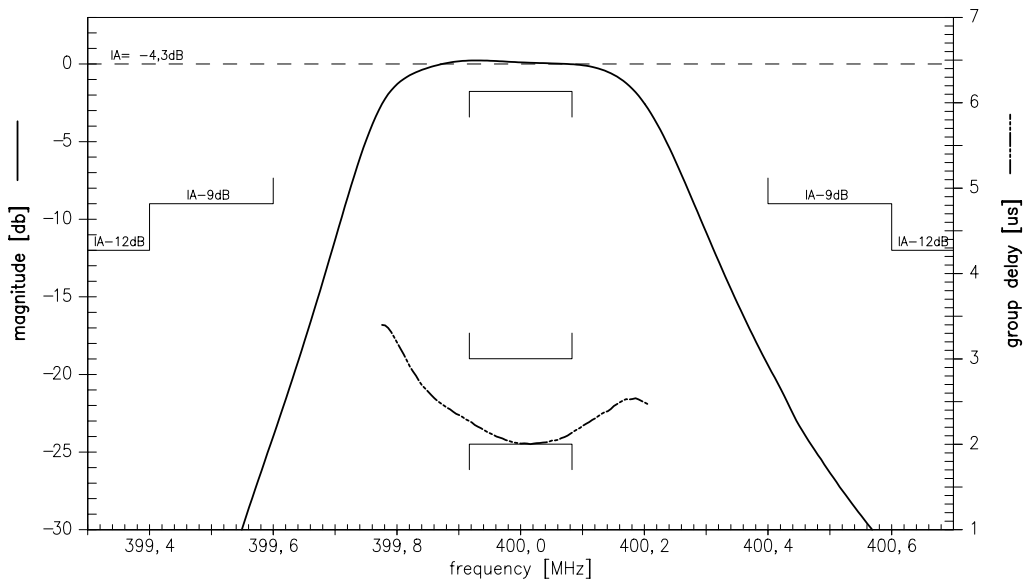
Test matching network to 50Ω, low pass example (actual element values depend on PCB layout. S-parameters of transformers TOKO B5FL available on request):



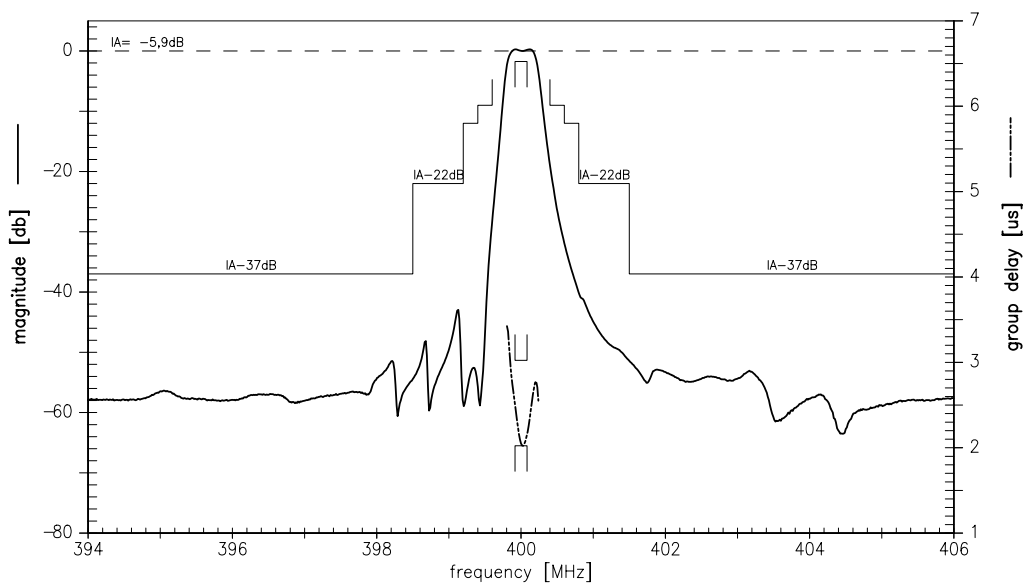
$L_c = 39\text{ nH}$
 $C_{p1} = C_{p4} = 6,8\text{ pF}$
 $L_{s2} = L_{s3} = 33\text{ nH}$



Transfer function (pass band):



Transfer function (wide band):





SAW Components

B7301

Low-Loss Filter for Mobile Communication

400,0 MHz

Data Sheet



Published by EPCOS AG

Surface Acoustic Wave Components Division, OFW E MF

P.O. Box 80 17 09, D-81617 München

© EPCOS AG 1999. All Rights Reserved.

As far as patents or other rights of third parties are concerned, liability is only assumed for components per se, not for applications, processes and circuits implemented within components or assemblies.

The information describes the type of component and shall not be considered as assured characteristics.

Terms of delivery and rights to change design reserved.

For questions on technology, prices and delivery please contact the sales offices of EPCOS AG or the international representatives.

Due to technical requirements components may contain dangerous substances. For information on the type in question please also contact one of our sales offices.